

#3530 – Conversion Kit

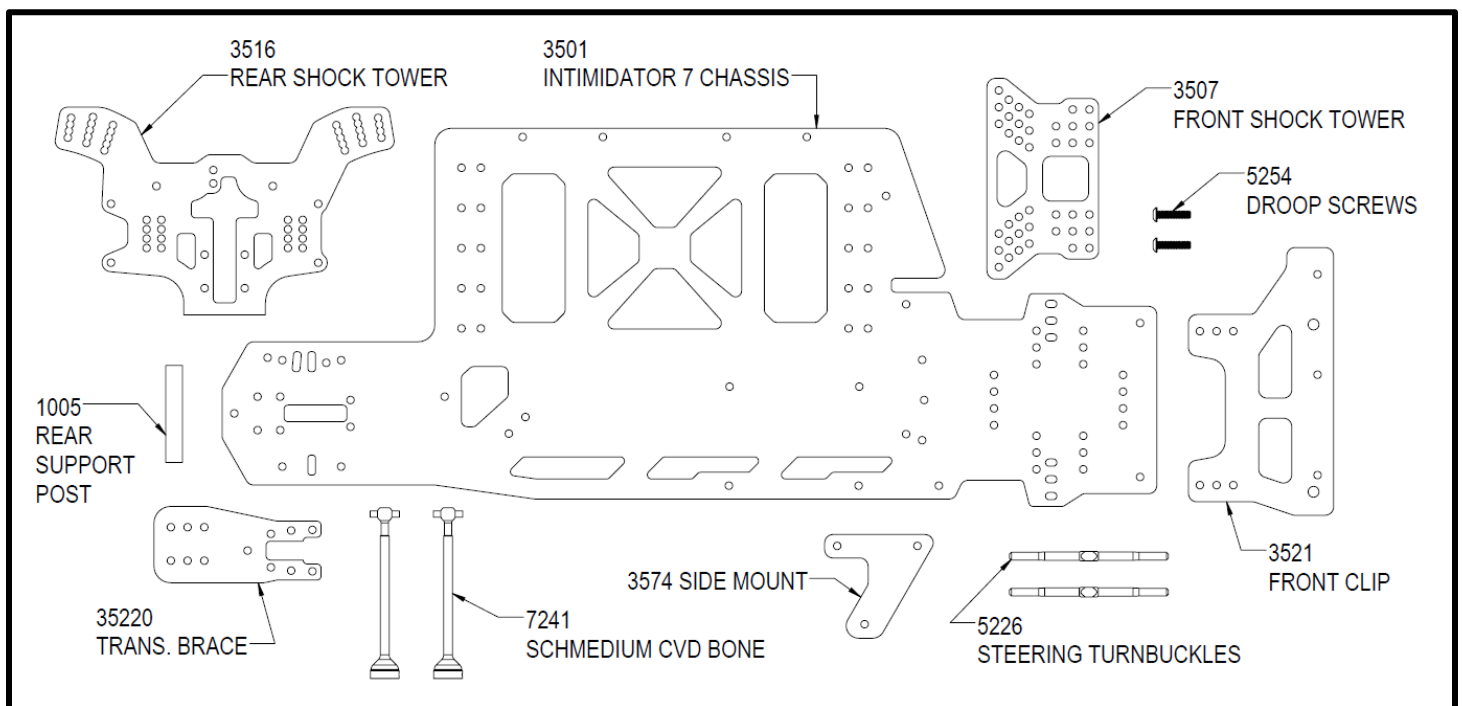
Intimidator G6 to Intimidator 7



Please visit our website to download the complete Intimidator 7 DD instruction manual. The manual can be viewed in PDF form or printed out for reference. Follow the assembly steps in the manual using the included parts along with the parts from your Intimidator G6 car.

www.customworksrc.com (click on Tech Center)

PARTS INCLUDED IN THIS KIT:



Listed below are other parts that are updated for the Intimidator 7. Older versions of these parts will work fine though.

3226 BATTERY STRAP MOUNTS – improved design to better cradle the battery

3008 NARROW BATTERY STRAP – creates more clearance for battery leads

1433 MDX SPRING COLLARS – updated to include ¼ turn notches for easy reference

4121 LEFT SIDE DIRECT DRIVE PLATE – motor screw slots lengthened and pinion wrench slot added

Additional Hop-Up Parts:

7243 ALUMINUM SCHMEDIUM CVD BONE – less rotating weight in the drive train

4228 FRONT SWAY BAR KIT – stabilizes the front end on high bite tracks

3252 CARBON FRONT ARM EARS – stronger version of the stock plastic pieces

7208 & 7228 REAR WHEEL SPACERS – space the rear wheels out to change handling characteristics

9912 ½ OUNCE BRASS WEIGHT – attaches to any open battery mount holes